

Real Life Applications of Networks and Graphs

- A need to have an understanding of Networks and Graphs arises in many real-life situations, some of which are outlined below:

1) The Internet is a very fast virtual graph. Every website page is a vertex in the network and the hyperlinks are the edges connecting the network together. The Internet is the largest network ever created by mankind.

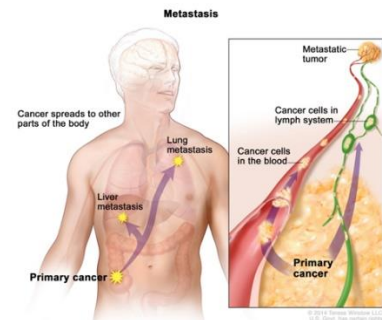


2) All train, plane and subway networks form a graph. This can be used to create efficient timetables or schedules. Click the link below to see the map of the London Underground.

<https://tfl.gov.uk/maps/track/tube>



3) The spread of diseases and epidemics can be modelled using networks.



4) The grammatical structure of languages can be modelled using graphs. Being able to model the language in a graph allows us to make translation algorithms e.g. Google Translate

