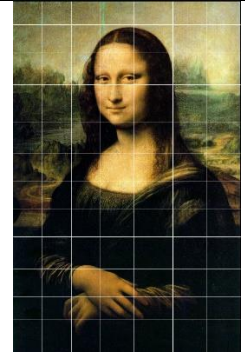


Real Life Applications of Coordinate Geometry

- The father of Co-ordinate Geometry was a French mathematician by the name of Rene Descartes.
- The story goes that he was lying in bed one night and saw a fly landing on the ceiling. He came up with a way of describing where the fly was on the ceiling and Co-ordinate Geometry was born!



1) Some Renaissance artists used to place a grid over what they were painting to help break it up into smaller parts. The different points on the grid could be represented using co-ordinates.



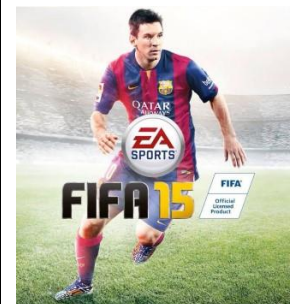
2) Co-ordinate Geometry is used in satellite navigation systems or 'sat navs'. They use GPS (Global Positioning System) to track vehicles positions and estimate distances.



3) Archaeologists use a grid to map a dig site and show the location of artefacts that have been discovered.



4) Computer Gaming uses a lot of co-ordinate geometry because if you want objects to move on a computer screen you need to tell them where to move to!



5) Architects use Co-ordinate Geometry to calculate distances, inclines and angles without having to actually measure them.

6) Co-ordinate Geometry is used in the design of missile guidance systems on naval warships. It can also be used to navigate at sea.

